



MARTIN[™]
ENERGY GROUP

Generating Reliable, Clean Energy.

Our **Qualifications**

Why **Martin Energy**

Martin Energy Group (MEG) has its roots in 1960 when founder Harlan Martin recognized potential in the power generation industry. In the years following, the Martin company was founded and quickly expanded its capabilities, packaging new equipment, and exploring new frontiers. Since then, under CEO Marcus Martin's guidance, Martin Energy Group has become an industry leader specializing in creating reliable and innovative energy solutions for companies all over the world.

We are a comprehensive solutions provider for microgrids, generator packages, combined heat and power (CHP) systems, switch gear, battery energy storage, anaerobic digester design & construction, and renewable natural gas systems.

MEG supplies and services the full range of power generation products including gas handling skids, waste heat recovery systems, absorption chilling systems, and carbon credit monitoring systems. We also include long term service agreements (LTSA).

Our packages serve a wide variety of industries and applications – including greenhouses, hospitals, universities, manufacturing sites, landfills, mining operations, oil fields, wastewater treatment, landfill gas, and data centers.

MEG has installed over 1,500 gas and diesel power systems and 500+ combined heat and power plants in the United States and around the globe including Canada, Central and South America, Africa, Europe, Asia, the Middle East, and Australia. Our commitment to customer satisfaction is second-to-none, and we strive to engineer turn-key solutions that exceed your expectations.

**For your free feasibility study or further information, please contact
sales@martinenergygroup.com**



**Martin Energy Group
excels in providing custom
solutions for our clients'
complex energy needs.**

Our Services

Martin Energy Group Services, LLC provides industry-leading services to our clients via a wide range of delivery platforms. The foundation of all these platforms is our customer-centric approach, which allows us to be flexible and accountable with the services we offer. We have the capability and leadership to manage technically complex projects and programs through every phase.

Our professionals work with the latest in technology, industry best practices, and regulatory compliance guidelines to support our clients and their projects. Today, Martin Energy Group typically provides services under the following delivery options:

Professional Services:

- ✓ Mechanical and Electrical Engineers
- ✓ ASME Certified Welders and Facilities
- ✓ UL Certified Controls and Switchgear Facilities
- ✓ Certified Project Management Professionals
- ✓ Certified Process Engineers
- ✓ Design/Build and EPCM
- ✓ Preconstruction and Procurement
- ✓ Construction and Installation Management
- ✓ Integrated Project Delivery (IPD)
- ✓ Owner and Company Representation
- ✓ Third-Party Civil, Structural and Architectural (CSA)
- ✓ 24/7 remote monitoring and support



Company Contacts



BRANCH OFFICES

FRAZIER PARK, CA

5248 Frazier Mtn Park Rd.
Frazier Park, CA 93225

Service Office
3612 Arroyo Trail
Frazier Park, CA 93225
Galen Weaver, Service Technician
gweaver@martinenergygroup.com

UXBRIDGE, MA

Martin Energy Group Services, LLC
66 Industrial Drive, Suite B
Uxbridge, MA 01569
(508) 779-7505
Joel Weaver, Service Manager
jweaver@martinenergygroup.com

AUSTRALIA

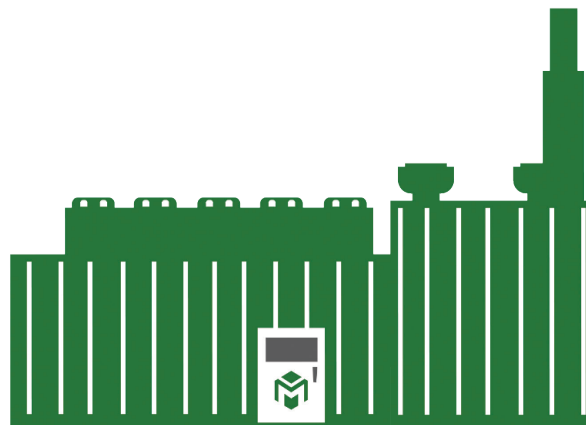
5491 Warraderry Way
Canowindra NSW 2804, Australia
David Eberly
deberly@martinenergygroup.com.au
(61) 447-486-581

CANADA

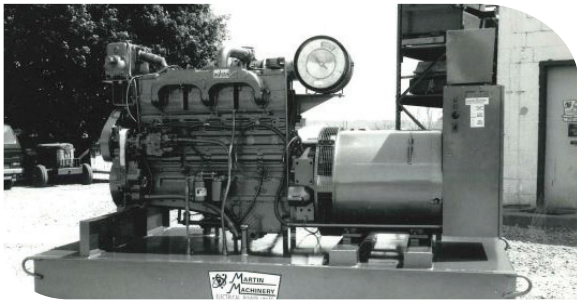
1925 County Rd. 42
Belle River, ON N0R 1A0
Marcus Lee Martin
mleemartin@martinenergygroup.com
(519) 504-7999

CAYEY, PUERTO RICO

(856) 723-6374
Joel Weaver
jweaver@martinenergygroup.com



Business Overview



A Martin MCD-230 unit ready to ship from the Martindale shop.

1963

Martin Machinery founder Harlan began helping his brother Isaac with generator repairs and sales.

1976

Martin Machinery has one employee. Harlan founded Martin Machinery in Martindale, PA (Lancaster County) with a focus on reconditioning gensets.

Also sold PTO farm-type generators. Gradually moved into the used and new diesels for emergency standby for farms and institutions, such as hospitals, nursing homes, etc., as well as heavy power requirement beyond the grid, for applications such as coal mines, saw mills, portable batch plants, portable crushers, etc.

1981

Became established as Original Equipment Manufacturer (OEM) for Cummins Engine Company. This brought a whole new opportunity to Martin Machinery. Sold more new units including 2 each of 1000 kWE units to Venezuela in June of 1982.

One of two 1000 kW Cummins units being loaded for shipment to Venezuela, in 1982.



Martin Machinery has approximately 8 employees

1982

Began selling power units to run on gas from anaerobic digesters. Recognized much potential in digester applications. Held seminars for local farmers.

1983

Martin Machinery begins focusing on iron sponge scrubbers for digesters.

1990s

All three of Harlan's sons are a part of the work force. Units are shipped to many different countries including Russia, Chili, Venezuela, Paraguay, Egypt, Nigeria, etc., including Natural Gas CHP (Combined Heat and Power), and diesels.



Business Overview

continued

1994

Marcus Martin joins the business and begins working on standby and prime units.

1998

Pivotal Year - Marcus develops modular CHP units for Martin Machinery.

1999

The interest in Green Energy picked up considerably. More effort went into the designing of heat recovery units and paralleling switch gear.

2000

Satellite shop opened in Missouri for building heat recovery systems.

2004

Gen-Tec is formed to become the leading group to engineer and design UL certified control systems to parallel the Green Energy units to the utility grid.



Biological gas scrubber, Indiana, USA.

2009

Martin Machinery has approximately 50 employees.

Energy Cube is formed to begin development of gas scrubbers. Research and development begins on a biological H₂S scrubber.

2012

First successful biological scrubber installation.

2015

Martin Machinery is dissolved as an entity, and Martin Energy Group (MEG) is formed, with Marcus Martin as CEO.

Martin Energy Group has approximately 70 employees.
Over 370 MW of power have been installed by Martin in CHP alone.

2016

Martin Energy Group has over 100 employees.

California-based digester construction company is added to the Martin group of companies, forming Martin Construction Resource (MCR).

2017

Martin Energy Group headquarters move to Tipton, Missouri.

Energy storage (battery) and RNG (Renewable Natural Gas) product line is developed. MEG offers new financing options such as PPA (purchase power agreement.)

2020's



Tipton Missouri Headquarters Facility



Facilities



Project Highlights

Martin Energy is a turnkey operation—all projects were designed, manufactured, and commissioned in-house.



BIG MARBLE FARMS GREENHOUSE

13.3 MW, Natural Gas
CHP

Engines: Guascor 100EM, 56HM, & 56SL
Commissioned 2020, expansion in 2023



COMMERCIAL FACILITY

10MW, Natural Gas

Backup Power System

Peaking project with full EPC under MEG

Engines: Jenbacher J620's

Commissioned – Q4 2024



CC1 BOTTLERS

8.0 MW, Propane

CHP with Battery

Engines: Guascor 100EM and 56SL

Commissioned 2020

Project Highlights

Martin Energy is a turnkey operation—all projects were designed, manufactured, and commissioned in-house.



📍 CAYEY, PUERTO RICO

CC1 BOTTLERS

6.6 MW, Propane
CHP with Battery
Engines: Guascor 48SL
Commissioned 2020



📍 EAST FISHKILL, NEW YORK

HAUGLAND ENERGY UTILITY

2.0 MW, Natural Gas
Backup Power with 2MW battery
Engines: CAT 3520
Commissioned 2023



📍 KEENESBURG, COLORADO

STELLAR J

DAIRY FARMS SITES 1 & 2

1.0 MW, Natural Gas
CHP, Switchgear with E-house
Engines: 56SL
Commissioned 2023

Project Highlights

Martin Energy is a turnkey operation—all projects were designed, manufactured, and commissioned in-house.



LENT HILL DAIRY FARM

1.0 MW, Biogas
CHP, with full gas conditioning
Engines: MAN 3262 LE212
Commissioned 2023



KNOUSE FOODS FOOD PROCESSING

1.25 MW Digester & Natural Gas Blend
CHP
Engine: 56HM
Commissioned 2018



VIA VERDE GREENHOUSE

6.0 MW, Natural Gas
CHP, with CO₂ Recovery
Engines: 56SL
Commissioned 2021



