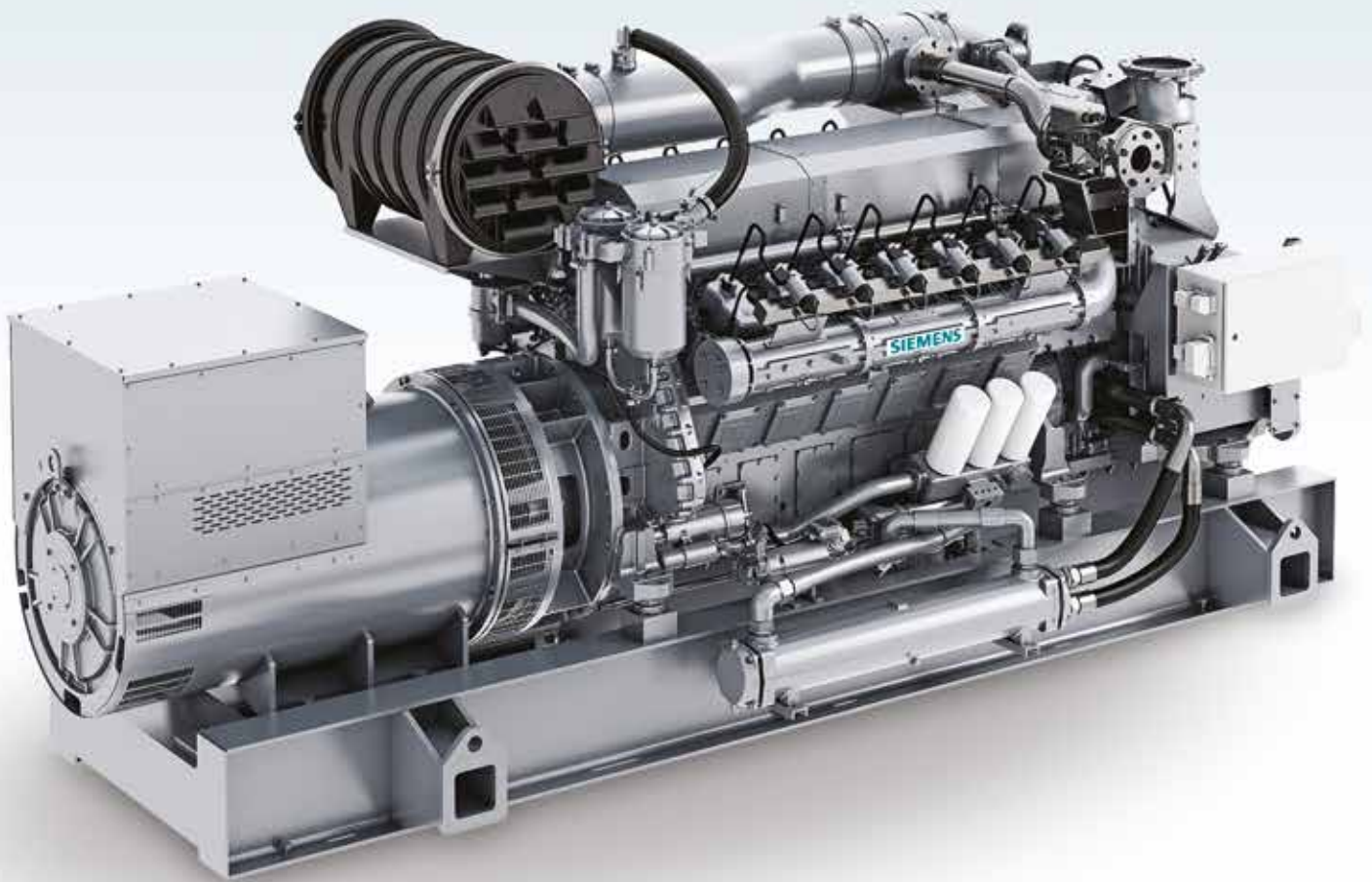


**SIEMENS**

*Ingenuity for life*



Power Generation

# Siemens gas engines fuel flexibility

Power ratings

[siemens.com](https://www.siemens.com)

## Siemens engines fuel flexibility

Syngas	Landfill	Digester	Natural Gas	Well Gas	Propane
120 – 375 Btu/ft <sup>3</sup>	375 – 620	670 – 805	805 – 1,130	1,085 – 2,500	2,500 – 2,690
4.5 MJ/NM <sup>3</sup>	18 – 21	22 – 26	30 – 40	38 – 87	87 – 100

## Natural gas <sup>2)</sup> fueled engines & gen-sets - MN=75 <sup>1)</sup>

Model SGE-FR <sup>3)</sup>	Cylinders	Disp. (l)	(kWb)		(kWe)	
			1,500 rpm	1,800 rpm	1,500 rpm	1,800 rpm
SGE-18FR	6L	18	150	180	142	171
SGE-24FR	8L	24	200	238	191	226

Model SGE-FL <sup>3)</sup>	Cylinders	Disp. (l)	(kWb)		(kWe)		
			1,500 rpm	1,800 rpm	1,500 rpm	1,800 rpm	
SGE-18FL	55	6L	18	275	300	264	287
SGE-24FL	55	8L	24	360	400	347	385
SGE-36FL	55	12V	36	550	600	529	577
SGE-48FL	55	16V	48	725	792	703	761

Model SGE-SL-SM	Cylinders	Disp. (l)	(kWb)			(kWe)		
			1,200 rpm	1,500 rpm	1,800 rpm	1,200 rpm	1,500 rpm	1,800 rpm
SGE-18SL	6L	18	251	314	350	240	304	336
SGE-24SL	8L	24	335	419	453	320	405	436
SGE-36SL	12V	36	502	630	700	482	609	678
SGE-48SL	16V	48	670	838	906	642	812	880
SGE-56SL	16V	56	788	985	1,067	759	957	1,028
SGE-56SM	16V	56	-	1,055	1,100	-	1,025	1,065

Model SGE-HM	Cylinders	Disp. (l)	(kWb)			(kWe)		
			1,200 rpm	1,500 rpm	1,800 rpm	1,200 rpm	1,500 rpm	1,800 rpm
SGE-24HM	8L	24	-	520	520	-	500	500
SGE-42HM	12V	42	-	1,040	1,040	-	1,011	1,011
SGE-56HM	16V	56	1,040	1,240	1,350	1,007	1,200	1,308

Model SGE-EM	Cylinders	Disp. (l)	(kWb)			(kWe)		
			1,200 rpm	1,500 rpm	1,800 rpm	1,200 rpm	1,500 rpm	1,800 rpm
SGE-86EM	12V	86	-	2,065	-	-	2,012	-

1) For other MN (methane number) contact the Sales team

2) According to fuel specification IC-G-D-30-002

3) FR and FL series not available in USA market

## BioGas, landfill, WWTP, biodigestion, fueled engines & gen-sets <sup>4)</sup>

Model SGE-SL-SM	Cylinders	Disp. (l)	(kWb)			(kWe)		
			1,200 rpm	1,500 rpm	1,800 rpm	1,200 rpm	1,500 rpm	1,800 rpm
SGE-18SL	6L	18	251	314	350	240	304	336
SGE-24SL	8L	24	335	419	453	320	405	436
SGE-36SL	12V	36	502	630	700	482	609	678
SGE-48SL	16V	48	670	838	906	642	812	880
SGE-56SL	16V	56	788	985	1,067	759	957	1,028
SGE-56SM	16V	56	-	1,055	1,100	-	1,025	1,065

Model SGE-HM	Cylinders	Disp. (l)	(kWb)			(kWe)		
			1,200 rpm	1,500 rpm	1,800 rpm	1,200 rpm	1,500 rpm	1,800 rpm
SGE-24HM	8L	24	-	520	520	-	500	500
SGE-42HM	12V	42	-	1,040	1,040	-	1,011	1,011
SGE-56HM	16V	56	1,040	1,240	1,350	1,007	1,200	1,308

4) According to fuel specification IC-G-D-30-003

# Siemens fuel blending system for biogas engines

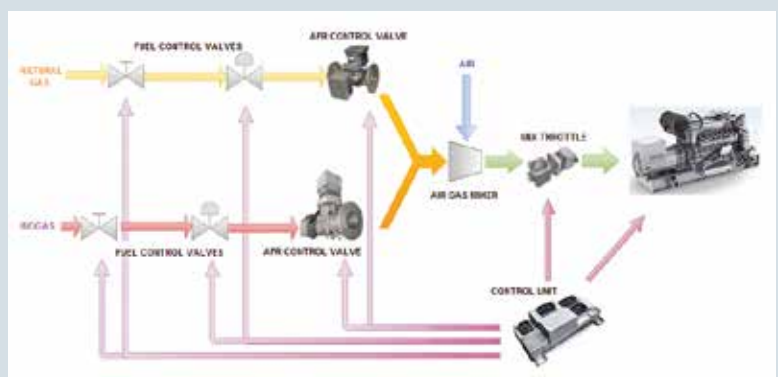
## What is a fuel blending system?

Ability of an engine to run on two fuels, fuel A, fuel B, or a mixture of both, being biogas the primary fuel and natural gas the secondary fuel, being the blending done on the engine and not outside.

## What are Siemens system's advantages & benefits?

**Change on the fly:** Our fuel blending system allows the change between modes at full power from a real 100% biogas consumption (0% natural gas – closed natural gas valve train) to any fuel blending ratio (>10%), including the possibility to run with 100% natural gas consumption (0% biogas – closed biogas valve train).

**Easy start capability:** The customer can select 100% Biogas but start the engine with natural gas. The control automatically changes to 100% Biogas once the engine has reached the rated speed. This helps to start a biogas facility when the biogas composition is very variable or unknown (for example after a long stop of the engine/facility).



## Synthesis gas engines & gen-sets <sup>5)</sup>

Model SGE-SL	Cylinders	Disp. (l)	(kWb)			(kWe)		
			1,200 rpm	1,500 rpm	1,800 rpm	1,200 rpm	1,500 rpm	1,800 rpm
SGE-18SL	6L	18	209	263	283	199	253	271
SGE-24SL	8L	24	281	350	377	269	338	362
SGE-36SL	12V	36	418	526	565	401	508	544
SGE-48SL	16V	48	561	700	754	541	678	729
SGE-56SL	16V	56	663	827	882	639	801	849

5) According to fuel specification IC-G-D-30-004

## Propane fueled engines & gen-sets <sup>6)</sup>

Model SGE-SM	Cylinders	Disp. (l)	(kWb)				(kWe)			
			1,500 rpm C <sub>3</sub> H <sub>8</sub> >95%	1,500 rpm C <sub>3</sub> H <sub>8</sub> >80%	1,800 rpm C <sub>3</sub> H <sub>8</sub> >95%	1,800 rpm C <sub>3</sub> H <sub>8</sub> >80%	1,500 rpm 95%	1,500 rpm 80%	1,800 rpm 95%	1,800 rpm 80%
SGE-18SM	6L	18	315	275	350	300	303	264	335	287
SGE-24SM	8L	24	419	360	453	400	404	347	436	385
SGE-36SM	12V	36	630	550	700	600	610	530	676	577
SGE-48SM	16V	48	838	725	906	800	811	702	873	770

6) According to fuel specification IC-G-D-30-018

## Oil & gas well gas, flare gas and APG, mining gas, engines & gen-sets <sup>7)</sup>

Model SGE-SL	MN35 (kWb/kWe)		MN45 (kWb/kWe)			MN55 (kWb/kWe)		
	1,500 rpm	1,800 rpm	1,200 rpm	1,500 rpm	1,800 rpm	1,200 rpm	1,500 rpm	1,800 rpm
SGE-18SL	290/279	240/325	220 /210	275/264	300/287	252/242	315/303	350/335
SGE-24SL	390/376	450/433	290/278	360/347	400/385	335/322	419/404	453/436
SGE-36SL	580/562	675/652	440/422	550/530	600/577	503/485	630/610	700/676
SGE-48SL	775/750	900/867	580/559	725/702	800/770	670/645	838/811	906/873
SGE-56SL	900/872	1,050/1,012	671/646	900/872	905/872	788/760	1,055/1,025	1,067/1,028

7) According to fuel specification IC-G-D-30-038

Published by  
Siemens Energy, Inc. 2017

Siemens Energy, Inc.  
4400 N Alafaya Trail  
Orlando, FL 32826, USA

Siemens Holding Spain, S.A.  
Barrio de Oikia, 44  
20759 Zumaia (Gipuzkoa) Spain  
PO Box 30

Tel: (Int'l +34) 943 86 52 00  
Fax: (Int'l +34) 943 86 52 10

E-mail: Engines.pgdr.energy@siemens.com

For more information, please contact  
our Customer Support Center.  
Phone: +49 180 524 70 00  
Fax: +49 180 524 24 71  
(Charges depending on provider)  
E-mail: support.energy@siemens.com

Article-No. PGDR-B10014-00-4AU5

Subject to changes and errors. The  
information given in this document only  
contains general descriptions and/or  
performance features which may not  
always specifically reflect those described,  
or which may undergo modification in the  
course of further development of the  
products. The requested performance  
features are binding only when they are  
expressly agreed upon in the concluded  
contract.