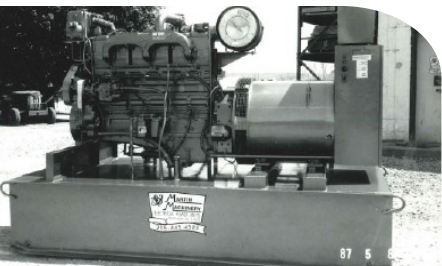




MARTIN ENERGY GROUP



A Martin MCD-230 unit ready to ship from the Martindale shop.

1963

Martin Machinery founder Harlan began helping his brother Isaac with generator repairs and sales.

1976

Martin Machinery has one employee.
Harlan founded Martin Machinery in Martindale, PA (Lancaster County) with a focus on reconditioning gensets.

Also sold PTO farm-type generators. Gradually moved into the used and new diesels for emergency standby for farms and institutions, such as hospitals, nursing homes, etc., as well as heavy power requirement beyond the grid, for applications such as coal mines, saw mills, portable batch plants, portable crushers, etc.

1981

Became established as Original Equipment Manufacturer (OEM) for Cummins Engine Company. This brought a whole new opportunity to Martin Machinery. Sold more new units including 2 each of 1000 kWE units to Venezuela in June of 1982.

One of two 1000 kW Cummins units being loaded for shipment to Venezuela, in 1982.



Martin Machinery has approximately 8 employees

1982

Began selling power units to run on gas from anaerobic digesters. Recognized much potential in digester applications. Held seminars for local farmers.

1983

Martin Machinery begins focusing on iron sponge scrubbers for digesters.

1990s

All three of Harlan's sons are a part of the work force. Units are shipped to many different countries including Russia, Chili, Venezuela, Paraguay, Egypt, Nigeria, etc., including Natural Gas CHP (Combined Heat and Power), and diesels.

1994

Marcus Martin joins the business and begins working on standby and prime units.

1998

Pivotal Year - Marcus develops modular CHP units for Martin Machinery.

1999

The interest in Green Energy picked up considerably. More effort went into the designing of heat recovery units and paralleling switch gear.

2000

Satellite shop opened in Missouri for building heat recovery systems.

2004

Gen-Tec is formed to become the leading group to engineer and design UL certified control systems to parallel the Green Energy units to the utility grid.

2009

Martin Machinery has approximately 50 employees.

Energy Cube is formed to begin development of gas scrubbers. Research and development begins in earnest on a biological H₂S scrubber.

2012

First successful biological scrubber installation.

2015

Martin Machinery is dissolved as an entity, and Martin Energy Group (MEG) is formed, with Marcus Martin as CEO.

Martin Energy Group has approximately 70 employees.

Over 370 MW of power have been installed by Martin, in CHP alone.

2016

Martin Energy Group has over 100 employees.

California-based digester construction company is added to the Martin group of companies, forming Martin Construction Resource (MCR).

2017

Martin Energy Group headquarters move to Tipton, Missouri.



Biological gas scrubber, Indiana, USA.



The Martin farmstead, New Holland, PA.
Gensets were bought and sold on this farm by the Martins in the 1960s.